

TECHNICAL DESCRIPTION:

- Expands refrigerant by inducing a chaotic turbulent flow to the refrigerant.
- Accelerates change of state from liquid to gas by sharply reducing boundary effect and increasing total surface area of the vapor.
- Larger total surface area of vapor increases the capacity to absorb heat.
- Devices can be installed horizontally or vertically.
- 4 Sizes available

TYPICAL SAVINGS BY TYPE:

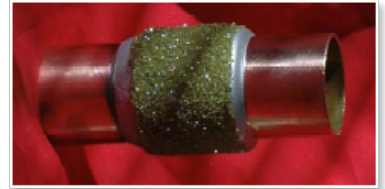
- Supermarket display cases - 34%
- Walk-in coolers & freezers - 18%
- Refrigerated vending machines - 13%
- Reach-in refrigerators & freezers - 12%
- Ice machines - 10%
- Beverage merchandisers - 5%
- Other - 8%

RMS-1

ENERGY EFFICIENCY PRODUCT

REDUCES ENERGY CONSUMPTION BY **8% to 15%**

The RMS-1™, like the Articmaster™, is a mechanical device installed in the refrigerant circulation line of HVAC equipment. However, where the Articmaster improves efficiency at the condenser, the RMS-1 works to improve efficiency at the evaporator. The RMS-1 models achieve about 8 to 12% energy



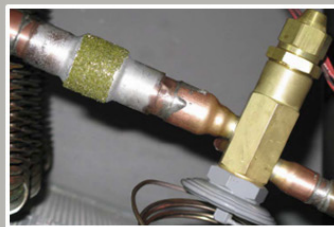
savings. The RMS-1 was designed expressly for the refrigeration market. The RMS-1 is installed downstream of the expansion device.

OUR MISSION:

To deploy the most effective energy efficiency technologies, to improve quality of life.

FEATURES:

- The RMS-1 is an evaporator optimizer
- Retrofittable to refrigeration and A/C systems
- Reduces energy consumption by 8% - 15%
- Designed expressly for refrigeration market, but also works very well with Air Conditioning
- Small, compact, and rugged
- No moving parts
- No electricity
- Easy to install
- No calibration or adjustments needed
- Seated downstream of expansion device prior to the evaporator coils
- Accelerates change of state from liquid to gas
- Ensures uniform distribution of refrigerant vapor to all spider tubes in the evaporator
- Attractive pricing ensures rapid payback



RMS-1 can easily fit into more locations
 - Uses industrial diamonds for effective heat transfer in small spaces
 - Reduces energy consumption 8% -15%

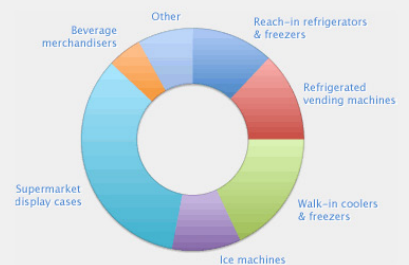
- Spider Tubes
- RMS-1
- Expansion Valve



There are 30 million commercial refrigerators in use in the U.S. alone.

RMS-1 Typical Savings by Type:

- Supermarket display cases – 34%
- Walk-in coolers & freezers – 18%
- Refrigerated vending machines – 13%
- Reach-in refrigerators & freezers – 12%
- Ice machines – 10%
- Beverage merchandisers – 5%
- Other – 8%



The RMS-1 has also been successfully implemented on refrigerated trucks and refrigerated railroad cars.

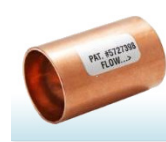
COMPLIMENTARY PRODUCTS:



Articmaster HVAC Refrigerant Control



Flute Valve High-performance micro-controller based manager



Flute Valve Efficiency Device